

•
• **Research**
• **Partnership to**
• **Secure Energy**
• **for America**
•

***RPSEA Unconventional Gas Conference
2011***

***April 19-20
Denver, Colorado***



Secure Energy for America



Introductions and Agenda

- Safety
- Opening Remarks – **James Schroeder**, President Western Energy Alliance, RPSEA Board Member
- Meeting Overview – *Kent Perry, RPSEA*
 - Agenda
 - Handouts – Slides
- Luncheon Speaker, **Tisha Conoly Schuller**, President and CEO, COGA
- Keynote Speaker - **Mike Ming**, *Secretary of Energy, State of Oklahoma*
- *Piceance Basin – Mamm Creek Field Review - Thursday*

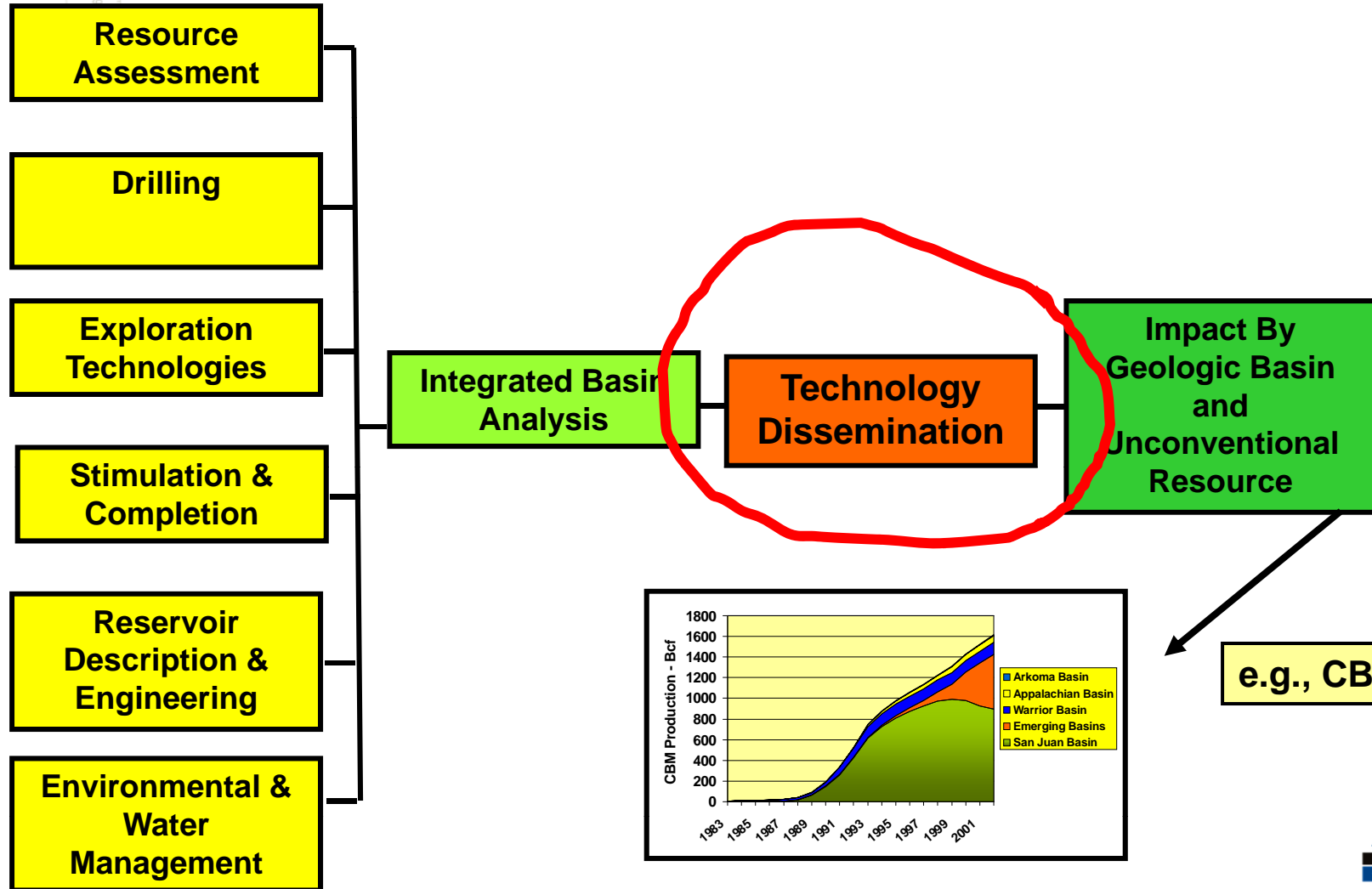


Research Partnership to Secure Energy for America (RPSEA)

- **Three Research Programs**
 - Ultra Deep Water
 - **Unconventional Gas**
 - Small Producer

www.rpsea.org

RPSEA Unconventional Gas Program Components & Approach



RPSEA Unconventional Gas Projects

Cross-Cutting Technical Projects 2007

UT – Fracturing
 LBNL – Self Teaching Expert System
 UT – Refracting
 TAMU – Fracture Design
 TAMU – Decision Model
 LBNL – High Resolution Imaging
 PSU – Microwave Coals
 Carter – Saws
 U of Tulsa – Novel Fracturing Fluids
 Stanford – Condensate

CSM - Coal Bugs
 Utah GS - Paleozoic Shales
 U of Tulsa – Wamsutter
 CSM – Gas Composition
 U of Utah – TGS
 CSM – Produced Wtr.
 CSM – Piceance TGS
 CSM – Strat Control

GE – Frac Water Reuse

BEG – Marcellus Natural Fractures

GTI – Barnett and Appalachia Produced Water

GTI – New Albany

Alabama - Shales

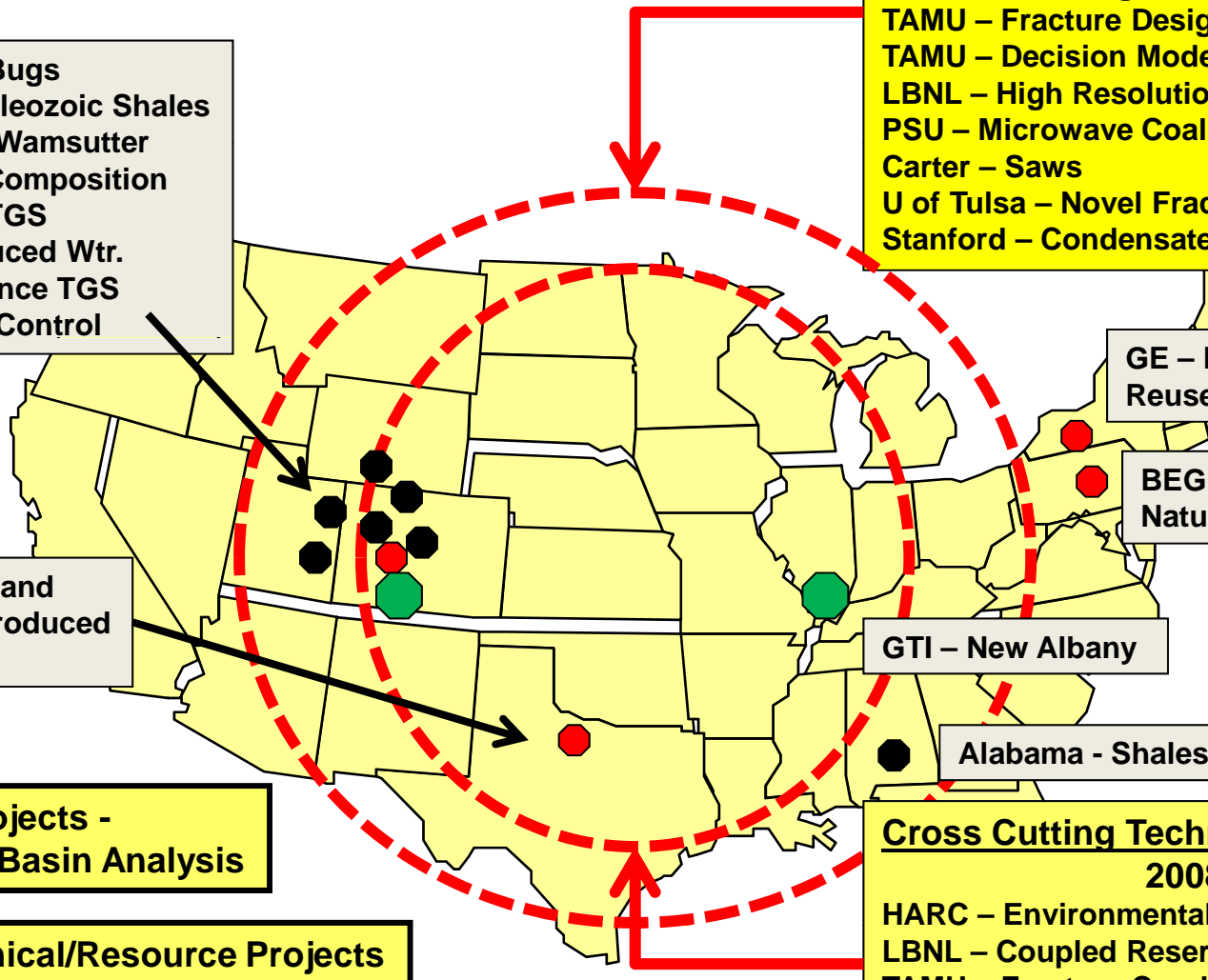
Cross Cutting Technical Projects 2008

HARC – Environmentally Friendly Drilling
 LBNL – Coupled Reservoir Model
 TAMU – Fracture Conductivity
 BEG – Multi – Azimuth Seismic
 Caltech – Gas Isotopes

Anchor Projects - Integrated Basin Analysis

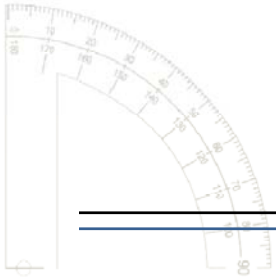
2008 Technical/Resource Projects

\$45 Million Research Portfolio

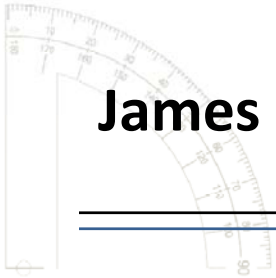


Meeting Logistics and Process

- **A Full Agenda – 27 Presentations**
 - 20 to 25 minute presentations followed by Q&A
 - Reception tonight 5:30 – 7:00 p.m.
- **All presentation material will be posted on the RSPEA website after the meeting**
- **Handouts – Agenda, Publications, RPSEA information**
- **Contact us anytime with Questions or for additional information**

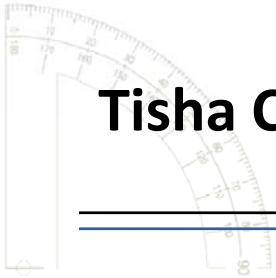


www.rpsea.org



James Schroeder

- **James Schroeder is President and CEO of Mesa Energy Partners, in his spare time he is currently serving as President of the Western Energy Alliance, formally IPAMs.**
- **Jim is also a member of the RPSEA Board of Directors and we appreciate the time he dedicates to these important organizations.**
- **Jim recently testified before the Committee on Natural Resources on legislative issues important to the O&G Industry.**



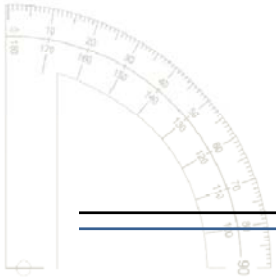
Tisha Conoly Schuller

Tisha Conoly Schuller
PRESIDENT & CHIEF EXECUTIVE OFFICER

Ms. Tisha Conoly Schuller has served as President & CEO of the Colorado Oil & Gas Association since December of 2009. As COGA President, Ms. Schuller is responsible for leading the oil & gas industry in Colorado legislative, regulatory, and public relations matters and serving as an industry spokesperson.

Previously, Ms. Schuller served as a Principal and Vice President with Tetra Tech, a national environmental consulting and engineering firm. In addition to running business operations, Ms. Schuller has spent the last 15 years conducting environmental permitting for oil and natural gas projects across the country.

She has a Bachelor of Science degree in Earth Systems with an emphasis in Geology from Stanford University.



Marriott Conference

Colorado F

Password: RPSEA